

# MATERIAL HANDLER 360X<sub>2</sub>

## specifications

Operating Weight: 99,200 lbs. (44 996 kg)

SAE Net Horsepower: 271 HP (202 kW)

Swing Torque: 111,000 lbf-ft. (150.5 kN•m)

### Engine

Isuzu AH-6HK1XYSS Tier 3 turbocharged diesel engine with electronic fuel control, 6-cylinder, Water-cooled, EGR with cooler, Air-to-air intercooler, Common-rail fuel injection, Fuel cooler, Glow plug cold weather starting aid, Auto idle-start, Auto warm-up, EPF engine protection, Remote dual stage fuel filtration, Remote oil filter, Green Plug oil drain, Cyclone air pre-cleaner, Double element air filter.

SAE net horsepower ..... 271 HP (202 kW) @ 2,000 rpm  
Displacement ..... 7.8 L  
Maximum torque ..... 797 lbf-ft (1 080 N-m) @ 1,500 rpm  
Starter ..... 24V-5.0 kW  
Alternator ..... 50 amp  
Battery ..... (2) 12-volt, 128 amp hours

### Cab and Controls

Pressurized cab with climate control A/C and heat with defroster, KAB® air suspension seat, Hydraulic cab riser with emergency lowering system, Level 1 cab guard - front, LCD monitor, illuminated soft-touch switches, SureGrip® joysticks, Steering wheel - adjustable/telescoping, Accel and brake pedals, Intermittent windshield wiper with washer, Roof hatch with sunshade, AM/FM radio, Digital clock, Dome light, Seat belt, Coat hook, Cup holder, Storage compartments, Floor mat, Footrest, Ashtray, 24-volt cigarette lighter, 12-volt outlet, Travel alarm, Handrail, Mirrors.

Selectable working modes, Anti-theft password protection system, On-board self-diagnostic system with memory, Auto-idling system, One-touch decelerator, Neutral safety start, Free Swing, Park Brake, Axle-oscillation control, Outrigger control, FWD/REV shift, Transmission shifter, Gate-lock safety shutoff.

A/C output ..... 18,250 BTU/hr  
Heater output ..... 20,240 BTU/hr

### Hydraulic System

Open-center system, Two variable-displacement axial-piston pumps for main circuits, One gear pump for pilot controls, One auxiliary gear pump for brake and steer, Main control valve with one 4-spool section, one 5-spool section, one 2-spool section, Brake valve with accumulators, Orbitrol steering valve, Oil cooler, Boom holding valve, 6 micron return filter, Firewall.

#### Hydraulic Pumps

Maximum flow ..... 2 x 79.3 gpm (2 x 300 l/min)  
Pilot pump maximum flow ..... 7.9 gpm (30 l/min)  
Auxiliary pump maximum flow ..... 17.6 gpm (67 l/min)

#### Relief Valve Settings

Boom up ..... 4,970 psi (343 bar)  
Boom down ..... 3,970 psi (274 bar)  
Arm circuit ..... 4,970 psi (343 bar)  
Swing circuit ..... 4,250 psi (293 bar)  
Travel ..... 4,970 psi (343 bar)  
Grapple open/close ..... 4,970 psi (343 bar)  
Grapple rotate ..... 1,500 psi (103 bar)

#### Hydraulic Oil Filtration

Return filter ..... 6 micron  
Pilot filter ..... 8 micron  
Suction screen ..... 105 micron



### Swing

Planetary reduction powered by axial-piston motor, Internal ring gear with grease cavity for swing pinion, Swing bearing is single-row, shear type ball bearing, Mechanical disc swing brake, Auto Swing Priority, Free Swing control.

Swing speed ..... 0 - 7.1 rpm  
Tail swing ..... 11' 6" (3.52 m)  
Swing torque ..... 111,000 lbf-ft. (150.5 kN•m)

### Chassis

Steel frame chassis with integral bearing tub, Replaceable bolt-on outrigger steps, (2) Toolbox - lockable, (4) Outrigger stabilizers with protective cylinder guards and 21-inch pads - simultaneous activation, Non-skid surface on chassis deck, Bolt-on ladders for ingress/egress at each end, Ladders on each side for upper access.

### Powertrain

ZF® 2HL290 Hydrostatic transmission with internal park brake, FWD/REV with 2-speed High/Low powershift, Rexroth A6VM160 axial piston variable displacement motor, Kessler® Series 81 planetary drive axles, Steering/oscillating front axle, Automatic/manual axle lockout, Rigid rear axle, 4WD, 2-wheel steer, Internal wet disc service brakes, Trelleborg® solid rubber tires with tread.

Tires ..... (4) Single, solid rubber 16.00 - 25  
Tire width ..... 16.0" (406 mm)  
Tire diameter ..... 58.1" (1.48 m)  
Turning radius to outside edge ..... 29' 3" (8.9 m)  
Steering angle ..... 29-degrees  
Travel speed - low ..... 0 - 3.4 mph (0 - 5.4 km/h)  
Travel speed - high ..... 0 - 11.4 mph (0 - 18.3 km/h)

### Lubricant and Coolant Capacity

Fuel tank ..... 153.22 gal. (580 liters)  
Hydraulic tank ..... 46.23 gal. (175 liters)  
Hydraulic system ..... 92.46 gal. (350 liters)  
Engine oil ..... 10.04 gal. (38.0 liters)  
Cooling system ..... 7.93 gal. (30.0 liters)  
Transmission ..... 0.79 gal. (3.0 Liters)  
Front axle ..... 9.25 gal. (35.0 Liters)  
Rear axle ..... 6.87 gal. (26.0 Liters)  
Wheel hubs (each) ..... 1.08 gal. (4.1 Liters)  
Swing drive ..... 2.77 gal. (10.5 Liters)

### Attachment

Boom length ..... 31' 2" (9.5 m)  
Arm length ..... 25' 4" (7.7 m)

### Attachment Cylinders

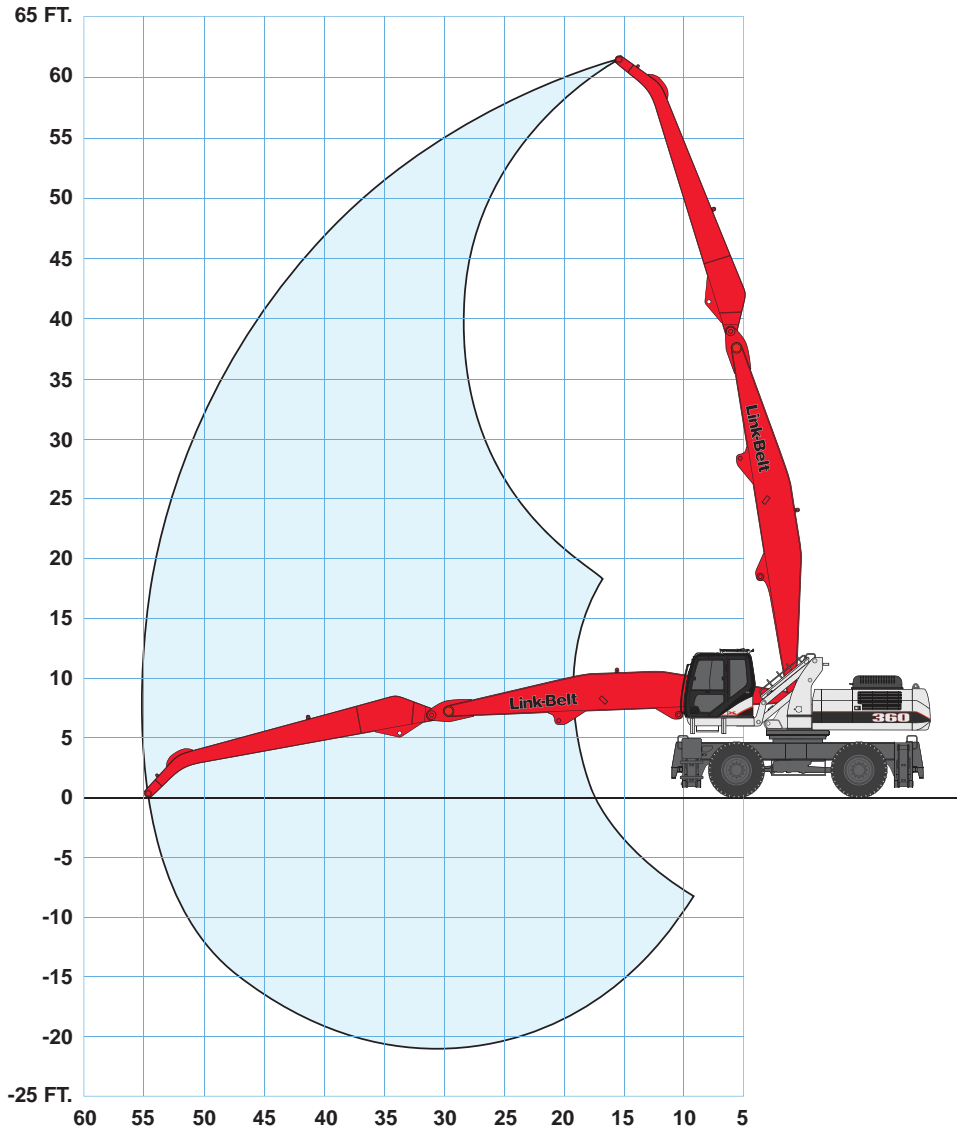
	number of cylinders - bore x rod x stroke
Boom	2 - 6.5" x 4.92" x 55.0" (165 mm x 125 mm x 1 397 mm)
Arm	1 - 6.5" x 4.5" x 66.0" (165 mm x 114 mm x 1 676 mm)

### Operating Weight

Working weight with hydraulic cab riser, 16.00 - 25 single tires, 56-foot 2-piece MH attachment, Young LO150C, 1.5 yd<sup>3</sup> 4-tine orange peel grapple, 18,850 lb. (8 550 kg) MH counterweight ..... 99,200 lbs. (44 996 kg)

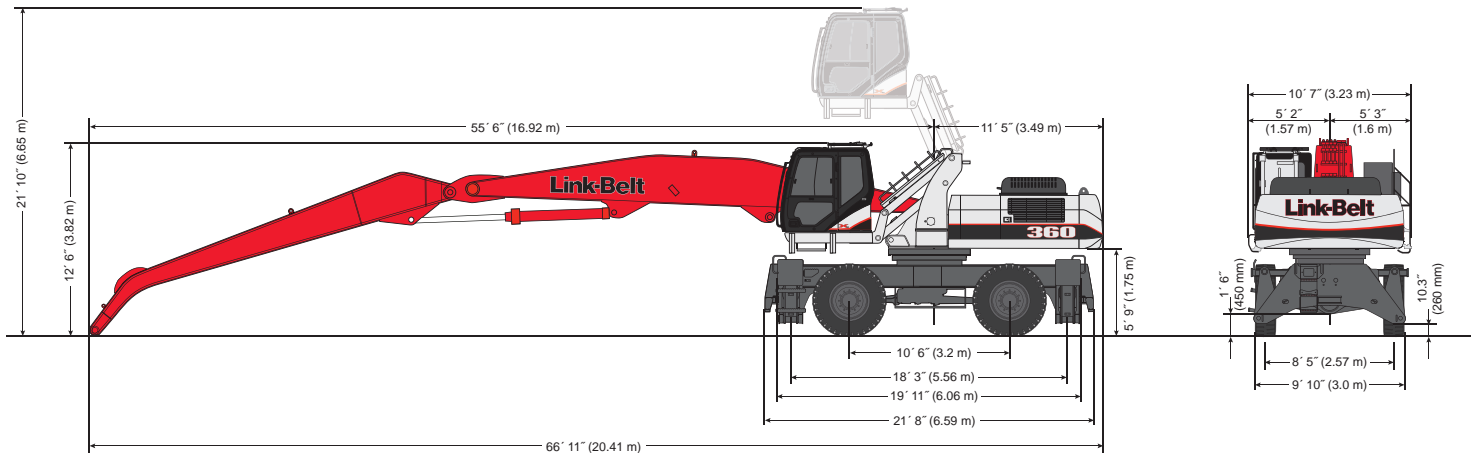
# 360 X2 RT Material Handler Specifications

## Working Ranges



Machine equipped with 31' 2" (9.5 m) boom	25' 4" Arm (7.7 m)
A. Maximum reach	55' 9" (17.0 m)
B. Maximum reach @ ground level	55' 0" (16.8 m)
C. Maximum depth	21' 1" (6.43 m)
D. Maximum height	62' 0" (18.89 m)

## Travel Dimensions



# 360 X2 RT Material Handler Specifications

## Lifting Capacities

25' 4" (7.7 m) Arm with 31' 2" (9.5 m) Boom

	Radius of Load																	
	15' 0" (4.57 m)		20' 0" (6.10 m)		25' 0" (7.62 m)		30' 0" (9.14 m)		35' 0" (10.66 m)		40' 0" (12.19 m)		45' 0" (13.72 m)		50' 0" (15.24 m)		55' 0" (16.76 m)	
	End	Side	End	Side	End	Side	End	Side	End	Side	End	Side	End	Side	End	Side	End	Side
<b>+60' 0" lbs</b> 18.29 m (kg)			<b>17,100*</b>	<b>17,100*</b>														
			7 756*	7 756*														
<b>+55' 0" lbs</b> 16.76 m (kg)					<b>16,200*</b>	<b>16,200*</b>	<b>13,200*</b>	<b>13,200*</b>										
					7 348*	7 348*	5 987*	5 987*										
<b>+50' 0" lbs</b> 15.24 m (kg)							<b>15,500*</b>	<b>15,500*</b>	<b>12,900*</b>	<b>12,900*</b>								
							7 031*	7 031*	5 851*	5 851*								
<b>+45' 0" lbs</b> 13.72 m (kg)							<b>16,200*</b>	<b>16,200*</b>	<b>14,800*</b>	<b>14,800*</b>	<b>12,100*</b>	<b>12,100*</b>						
							7 348*	7 348*	6 713*	6 713*	5 488*	5 488*						
<b>+40' 0" lbs</b> 12.19 m (kg)							<b>16,600*</b>	<b>16,600*</b>	<b>15,800*</b>	<b>15,800*</b>	<b>14,200*</b>	<b>14,200*</b>	<b>10,600*</b>	<b>10,600*</b>				
							7 530*	7 530*	7 167*	7 167*	6 441*	6 441*	4 808*	4 808*				
<b>+35' 0" lbs</b> 10.66 m (kg)							<b>16,900*</b>	<b>16,900*</b>	<b>16,600*</b>	<b>16,600*</b>	<b>15,500*</b>	<b>15,500*</b>	<b>13,100*</b>	<b>13,100*</b>				
							7 666*	7 666*	7 530*	7 530*	7 031*	7 031*	5 942*	5 942*				
<b>+30' 0" lbs</b> 9.14 m (kg)							<b>17,400*</b>	<b>17,400*</b>	<b>17,600*</b>	<b>17,600*</b>	<b>16,100*</b>	<b>16,100*</b>	<b>14,700*</b>	<b>14,200*</b>	<b>10,800*</b>	<b>10,800*</b>		
							7 893*	7 893*	7 983*	7 983*	7 303*	7 303*	6 668*	6 441*	4 899*	4 899*		
<b>+25' 0" lbs</b> 7.62 m (kg)					<b>17,000*</b>	<b>17,000*</b>	<b>18,600*</b>	<b>18,600*</b>	<b>18,100*</b>	<b>18,100*</b>	<b>16,300*</b>	<b>16,300*</b>	<b>14,700*</b>	<b>14,000*</b>	<b>12,700*</b>	<b>11,600*</b>		
					7 711*	7 711*	8 437*	8 437*	8 210*	8 210*	7 394*	7 394*	6 668*	6 350*	5 761*	5 262*		
<b>+20' 0" lbs</b> 6.10 m (kg)			<b>15,500*</b>	<b>15,500*</b>	<b>19,100*</b>	<b>19,100*</b>	<b>21,000*</b>	<b>21,000*</b>	<b>18,600*</b>	<b>18,600*</b>	<b>16,600*</b>	<b>16,600*</b>	<b>14,800*</b>	<b>13,800*</b>	<b>13,200*</b>	<b>11,500*</b>		
			7 031*	7 031*	8 664*	8 664*	9 525*	9 525*	8 437*	8 437*	7 530*	7 530*	6 713*	6 260*	5 987*	5 216*		
<b>+15' 0" lbs</b> 4.57 m (kg)			<b>21,600*</b>	<b>21,600*</b>	<b>25,000*</b>	<b>25,000*</b>	<b>22,000*</b>	<b>22,000*</b>	<b>19,100*</b>	<b>19,100*</b>	<b>16,800*</b>	<b>16,300*</b>	<b>14,900*</b>	<b>13,400*</b>	<b>13,100*</b>	<b>11,300*</b>	<b>9,300*</b>	<b>9,300*</b>
			9 798*	9 798*	11 340*	11 340*	9 979*	9 979*	8 664*	8 664*	7 620*	7 394*	6 759*	6 078*	5 942*	5 126*	4 218*	4 218*
<b>+10' 0" lbs</b> 3.05 m (kg)			<b>34,400*</b>	<b>34,400*</b>	<b>27,400*</b>	<b>27,400*</b>	<b>22,800*</b>	<b>22,800*</b>	<b>19,500*</b>	<b>19,400*</b>	<b>16,900*</b>	<b>15,800*</b>	<b>14,800*</b>	<b>13,100*</b>	<b>12,900*</b>	<b>11,100*</b>	<b>10,200*</b>	<b>9,400*</b>
			15 604*	15 604*	12 428*	12 428*	10 342*	10 342*	8 845*	8 800*	7 666*	7 167*	6 713*	5 942*	5 851*	5 035*	4 627*	4 264*
<b>+5' 0" lbs</b> 1.52 m (kg)			<b>35,600*</b>	<b>35,600*</b>	<b>28,100*</b>	<b>28,100*</b>	<b>23,100*</b>	<b>23,100*</b>	<b>19,600*</b>	<b>18,600*</b>	<b>16,800*</b>	<b>15,300*</b>	<b>14,600*</b>	<b>12,800*</b>	<b>12,400*</b>	<b>10,900*</b>	<b>9,900*</b>	<b>9,300*</b>
			16 148*	16 148*	12 746*	12 746*	10 478*	10 478*	8 890*	8 437*	7 620*	6 940*	6 622*	5 806*	5 625*	4 944*	4 491*	4 218*
<b>Ground lbs</b>			<b>16,500*</b>	<b>16,500*</b>	<b>27,900*</b>	<b>27,900*</b>	<b>22,900*</b>	<b>22,500*</b>	<b>19,300*</b>	<b>18,000*</b>	<b>16,400*</b>	<b>14,800*</b>	<b>14,000*</b>	<b>12,500*</b>	<b>11,700*</b>	<b>10,700*</b>	<b>8,700*</b>	<b>8,700*</b>
Line (kg)			7 484*	7 484*	12 655*	12 655*	10 387*	10 206*	8 754*	8 165*	7 439*	6 713*	6 350*	5 670*	5 307*	4 853*	3 946*	3 946*
<b>-5' 0" lbs</b> -1.52 m (kg)	<b>5,900*</b>	<b>5,900*</b>	<b>14,200*</b>	<b>14,200*</b>	<b>26,600*</b>	<b>26,600*</b>	<b>22,000*</b>	<b>21,800*</b>	<b>18,400*</b>	<b>17,500*</b>	<b>15,600*</b>	<b>14,500*</b>	<b>13,100*</b>	<b>12,200*</b>	<b>10,600*</b>	<b>10,500*</b>		
	2 676*	2 676*	6 441*	6 441*	12 066*	12 066*	9 979*	9 888*	8 346*	7 938*	7 076*	6 577*	5 942*	5 534*	4 808*	4 763*		
<b>-10' 0" lbs</b> 3.05 m (kg)	<b>7,900*</b>	<b>7,900*</b>	<b>14,900*</b>	<b>14,900*</b>	<b>24,300*</b>	<b>24,300*</b>	<b>20,200*</b>	<b>20,200*</b>	<b>17,000*</b>	<b>17,000*</b>	<b>14,200*</b>	<b>14,200*</b>	<b>11,600*</b>	<b>11,600*</b>	<b>8,800*</b>	<b>8,800*</b>		
	3 583*	3 583*	6 759*	6 759*	11 022*	11 022*	9 163*	9 163*	7 711*	7 711*	6 441*	6 441*	5 262*	5 262*	3 992*	3 992*		
<b>-15' 0" lbs</b> 4.57 m (kg)	<b>10,300*</b>	<b>10,300*</b>	<b>16,800*</b>	<b>16,800*</b>	<b>20,900*</b>	<b>20,900*</b>	<b>17,600*</b>	<b>17,600*</b>	<b>14,800*</b>	<b>14,800*</b>	<b>12,100*</b>	<b>12,100*</b>	<b>9,500*</b>	<b>9,500*</b>				
	4 672*	4 672*	7 620*	7 620*	9 480*	9 480*	7 983*	7 983*	6 713*	6 713*	5 488*	5 488*	4 309*	4 309*				
<b>-20' 0" lbs</b> 6.10 m (kg)			<b>16,500*</b>	<b>16,500*</b>	<b>14,100*</b>	<b>14,100*</b>	<b>11,700*</b>	<b>11,700*</b>	<b>11,700*</b>	<b>11,700*</b>								
			7 484*	7 484*	6 396*	6 396*	5 307*	5 307*										

### Notes: Material Handler lifting capacities

- Lifting capacities shown should not be exceeded. Weight of all lifting accessories must be deducted from the above lifting capacities.
- Lifting capacities are based on machine standing on firm, uniform supporting surface. User must make allowances for job conditions such as soft or uneven ground.
- Lifting capacities shown do not exceed 75% of minimum tipping loads or 87% of hydraulic capacities. **Capacities marked with an asterisk (\*) are limited by hydraulic capacities.**
- Least stable position is over the side.
- Operator should be fully acquainted with the Operator's Manual & Operating Safety Booklet, furnished by LBX before operating the machine.
- Capacities apply only to the machine as originally manufactured and normally equipped by LBX Company LLC.
- Lift capacity ratings are based on SAE-J2518.

# 360 X2 RT Material Handler Specifications

## Standard and Optional Equipment

<b>CAB</b>	Travel Alarm with Cancel Switch..... ✓	<b>HYDRAULICS</b>	<b>ATTACHMENT</b>
12V Power Outlet..... ✓	Trip Meter - Digital..... ✓	Accumulators for Brake Circuit..... ✓	31' 2" (9.5 m) Main Boom..... ✓
24V Lighter..... ✓	Wiper & Washer..... ✓	Attachment Cushion Valve..... ✓	25' 4" (7.7 m) Arm – Droop Style..... ✓
Air-Suspension Seat – KAB 855..... ✓	Work Modes..... ✓	Auto Swing Priority..... ✓	Boom Work Lights..... ✓
Accelerator Pedal..... ✓	<b>ENGINE</b>	Auxiliary Pump (Brake/Steer)..... ✓	Cylinders with Bolt-On Heads..... ✓
AM/FM Sound System..... ✓	Isuzu Tier 3 Diesel Engine..... ✓	Auxiliary Tool Settings - Memory..... ✓	Grapple Tubing
Anti-Theft Device..... ✓	24V System..... ✓	Auxiliary Tubing	Open/Close..... ✓
Ashtray..... ✓	Air Filter - Double Element..... ✓	(Grapple Open/Close/Rotate)..... ✓	Rotate with Flow Control..... ✓
Auxiliary Switches on Control Lever..... ✓	Air Pre-Cleaner..... ✓	Axial-Piston Pumps (Main)..... ✓	Lift Hooks – Arm/Boom..... ✓
Brake Pedal..... ✓	Auto Warm-Up System..... ✓	Fire Wall..... ✓	Remote Lube Bank..... ✓
Cab Filter - External..... ✓	Auto-Idle..... ✓	Free Swing..... ✓	Lincoln Lube System
Cab Handrails..... ✓	Cooling Fan..... ✓	Long Life Hydraulic Oil - 5,000 Hour..... ✓	Semi-Automatic..... ●
Cab Lights - Exterior..... ●	Drain for Fuel Tank..... ✓	Neutral Pump De-stroke..... ✓	Fully-Automatic..... ●
Cab Iso-Mounts..... ✓	Dual Remote Fuel Filters	Oil Cooler..... ✓	<b>GENERATOR OPTIONS</b>
Clear Roof Window..... ✓	with Water Separation..... ✓	Orbital Steering Valve..... ✓	20 kW Baldor/Hubbell
Climate Control A/C and Heater..... ✓	Emergency Engine Stop..... ✓	Pump Stand-By Pressure..... ✓	Solid-State Controller..... ●
Console Tilt..... ✓	Engine Oil Drain - Remote..... ✓	Servo Pilot Pump..... ✓	Conventional Controller..... ●
Cup Holder..... ✓	Engine Oil Filter - Remote..... ✓	<b>UPPERSTRUCTURE</b>	20 kW Baldor/Ohio..... ●
Defroster..... ✓	Engine Protection Feature..... ✓	Automatic Swing Brake..... ✓	Magnet Cable Included with
Digital Clock..... ✓	Fuel Shut-Off Valve..... ✓	Free Swing Control – On/Off..... ✓	All Gen-Set Options..... ✓
Emergency Cab Lowering System..... ✓	Glow Plug Pre-Heat..... ✓	Belly Pans..... ✓	Magnet Connecting Link..... ●
Emergency Rear Exit Ladder..... ✓	Idle-Start..... ✓	Center Cover (Over Main CV)..... ✓	
Exterior Light Harness..... ✓	Intercooler..... ✓	Counterweight for MH..... ✓	<b>PARTS KIT</b>
Floor Mat..... ✓	Neutral Safety Start..... ✓	Fuel Tank Belly Pan..... ✓	Engine Manual..... ✓
FOPS Head Guard (Level 2)..... ●	One-Touch Idle..... ✓	Hand Rail - RH Access..... ✓	Engine Oil Filter..... ✓
Front Guard..... ✓	Turbocharger..... ✓	HD Turntable Bearing and Tub..... ✓	Filter Wrench..... ✓
Gate Lock Hydraulic Activation..... ✓	<b>POWERTRAIN</b>	HD Upper Frame with Belly Pans..... ✓	Fuel Filters..... ✓
Horn..... ✓	16.00 – 25 Solid Rubber Tires (4)..... ✓	Lifting Eyes for Counterweight..... ✓	Grease Gun..... ✓
Hot & Cool Box..... ✓	2-Wheel Steer..... ✓	Lockable Fuel Cap & Service Doors..... ✓	Green Plug Drain Hose for
Hour Meter - Digital..... ✓	4WD..... ✓	Non-Slip Surface Pads..... ✓	Engine Oil Drain..... ✓
Hydraulic Cab Riser..... ✓	2-Speed Hydrostatic Transmission..... ✓	Rubber Bumper Guards..... ●	Hydraulic Return Filter..... ✓
Interior Dome Light..... ✓	FWD/REV Modulation..... ✓	Work Lights - Boom and Right	Ignition Keys..... ✓
LCD Monitor..... ✓	On-the-Go Shifting..... ✓	Front Corner..... ✓	Pilot Circuit Hydraulic Filter..... ✓
Maintenance Interval Reminders..... ✓	Axles – Kessler Planetary Drive..... ✓	<b>CHASSIS</b>	Rearview Mirrors..... ✓
Mirrors..... ✓	Axle Oscillation – Auto/Manual..... ✓	Outriggers (4)..... ✓	
On-Board Diagnostic System..... ✓	Front Axle – Steer/Oscillate..... ✓	Outrigger Steps – Bolt On..... ✓	
Radio Mute Switch..... ✓	Rear Axle – Rigid..... ✓	Outrigger Cylinder Guards..... ✓	
Roof Sun Shade..... ✓	Park Brake – Internal Trans..... ✓	Ladders – Both Ends/Bolt On..... ✓	
Seat Belt..... ✓	Transmission Guard..... ✓	Ladders – Both Sides..... ✓	
Storage Compartments..... ✓	Wet Disc Brakes – Internal..... ✓	Tie-Downs..... ✓	
Steering Wheel		Tool Box (2) – Lockable..... ✓	
Adjustable / Tilt - Telescopic..... ✓			
SureGrip Joysticks..... ✓			

### Equipment Key

Standard ✓ Optional ●

**Link-Belt**  
EXCAVATORS • FORESTRY  
DEMOLITION • MATERIAL HANDLING

LBX Company is the proud maker of quality Link-Belt excavators and is located in Lexington, KY.

Litho in USA 12/11 #LBX2199 supersedes #LBX2183

© LBX and © Link-Belt are registered trademarks. Copyright 2011. All rights reserved. We are constantly improving our products and therefore reserve the right to change designs and specifications.

**LBX**  
"Different by Design"

www.lbxco.com